



WORKER HAZARD PROTECTION



2025 ARTBA National Work Zone Management Conference

The LHSFNA within LIUNA



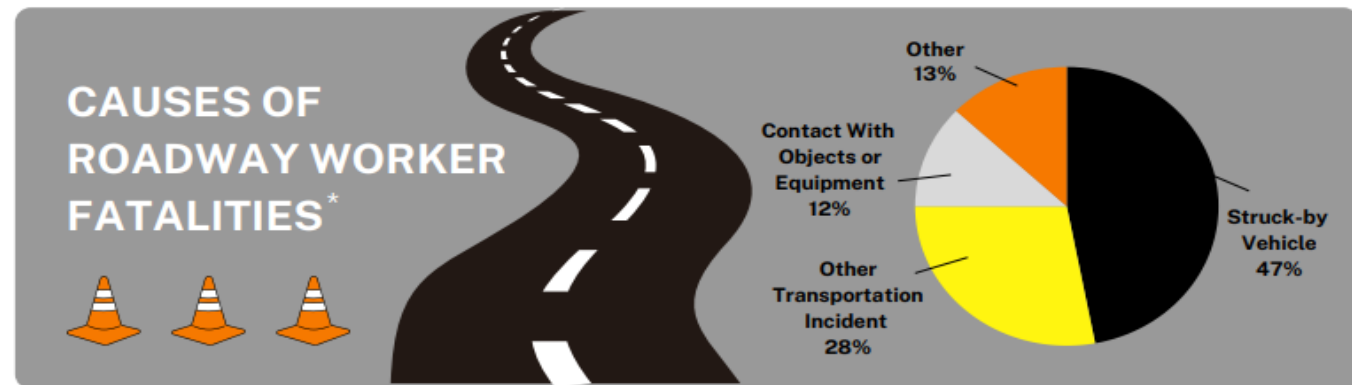
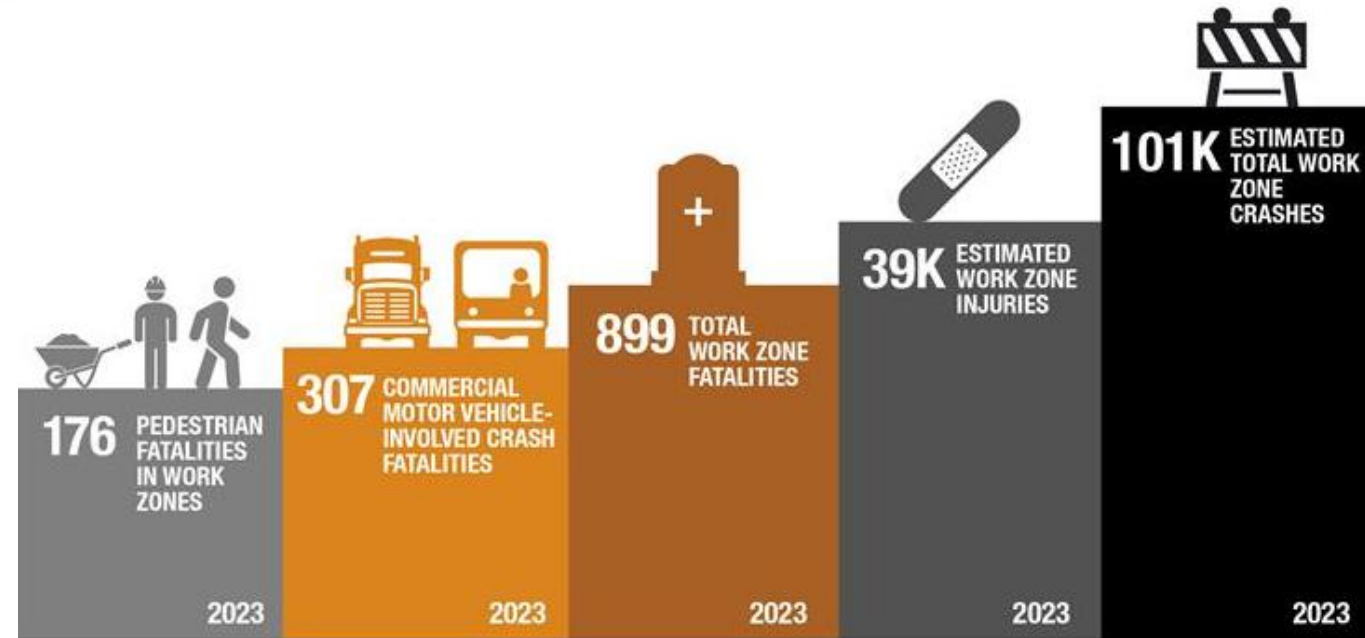
LIUNA!



The Problem



- Roadway worker fatalities are still occurring at an alarming rate
- Incidents are preventable and often point to failures in:
 - Safety measures
 - Driver behavior
 - Infrastructure design
- **Traveling Public**
 - Intrusions
 - Motorists are the primary victims
 - Speeding and driver inattention/impairment
- **Worker Safety**
 - Struck-by incidents are #1
 - Runovers or Back overs
 - Night work



Transportation Incidents Data



BLS - Calendar Year (CY) 2023 Construction Fatalities

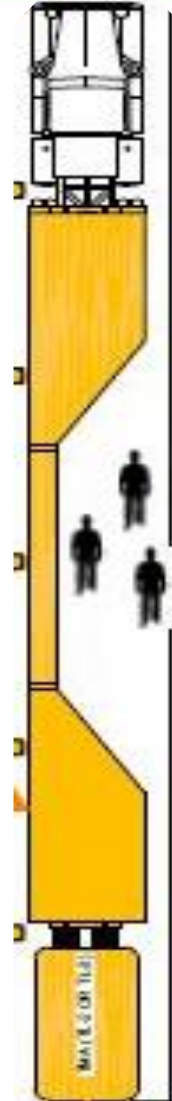
Fatal Injury Mechanism	Total Instances
Slips – Trips – Falls	421
Transportation Incidents	240
Harmful Substances, Environments	200
Contact Incidents	148
Violent Acts	24
Explosions, Fires	17
Total <i>including low frequency</i>	1,075

OSHA.GOV

Safety on Both Sides



Traveling Public



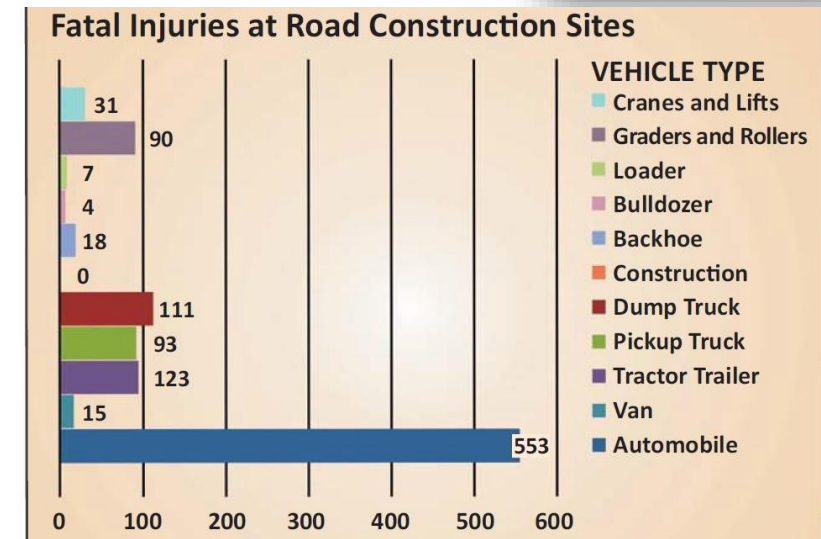
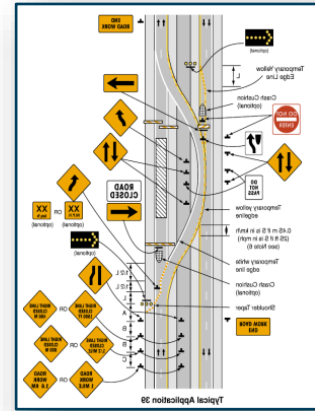
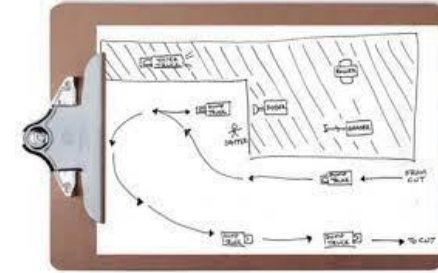
Workers



Internal Traffic Control Plans (ITCPs)



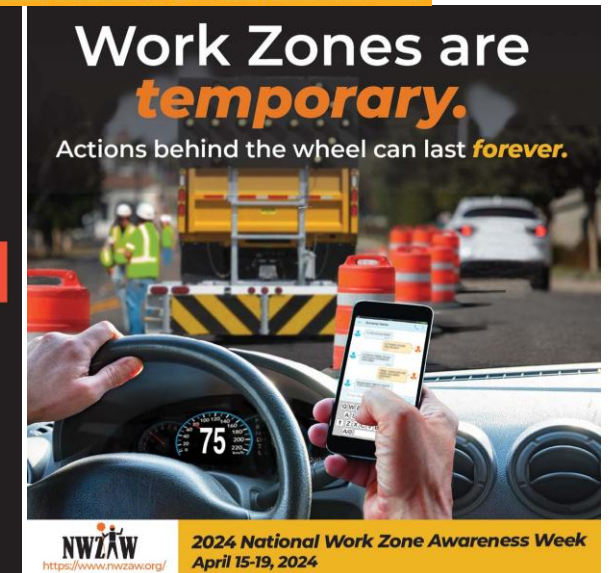
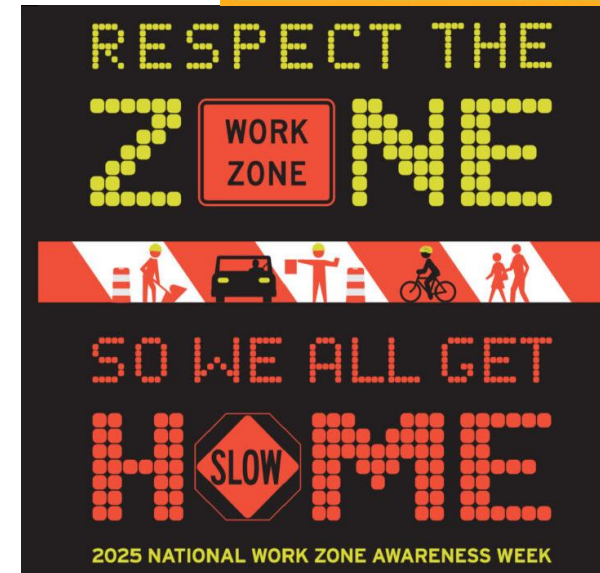
- A protocol to inform all parties operating within the workspace about the location of others
- Create “zones” designed to minimize interaction between workers on foot & construction vehicles
 - ✓ Provides clear direction to drivers and operators
 - ✓ Separates moving vehicles from workers on foot
 - ✓ Designates safe areas for workers on foot
 - ✓ Uses temporary traffic control devices to mark traffic paths
 - ✓ Maintains smooth traffic flow



Incident Prevention



- **Campaigns**
 - National WZ Awareness Week
 - Go Orange Day
- **Technology**
 - Digital Alerting Technology
 - Connected and Smart Work Zones
 - Proximity Devices
- **State & Federal Laws**
 - Automated Work Zone Speed Enforcement Programs
 - Bipartisan Infrastructure Law
 - Contingency and Other Funding



Resources



- **ANSI/ASSP A10.47**
 - Voluntary consensus standard that provides work zone safety guidance for highway construction
- **Work Zone Safety Information Clearinghouse**
 - Website dedicated to providing the transportation construction industry and the public with information to improve motorist, worker and pedestrian safety at www.workzonesafety.org
- **FHWA MUTCD**
 - Compilation of national standards for all traffic control devices, including road markings, highway signs and traffic signals
- **FHWA Subparts J – Work Zone Safety and Mobility & K –Temporary Traffic Control Devices**
- **Federal OSHA/ACCSH**
 - Specific Work Group for Work Zone Safety



Thank You!



Ryan R. Papariello, GSP
Safety & Health Specialist
Rpapariello@lhsfna.org
(202) 383-2816

www.lhsfna.org

